

Installed  
12-23-85

By Bruce

PAT 9000 MODIFICATION FOR +/- 15 VOLTS

A. PARTS

7915	Q11
7815	Q10
1 MFD, 50V	C25
1 MFD, 35V	C26
22MFD, 35V	C30

HEATSINKS (2) PLUS HARDWARE FOR VOLT. REG.

2 MOLEX TYPE PINS FOR J10 ON THE AUDIO/REG PCB

4 PINS FOR THE PROGRAM PLUG

B. WIRING

RUN WIRE FROM:

J10 PIN 7 TO A1 PIN P6 AND B1 PIN P6 (+15 VOLTS)

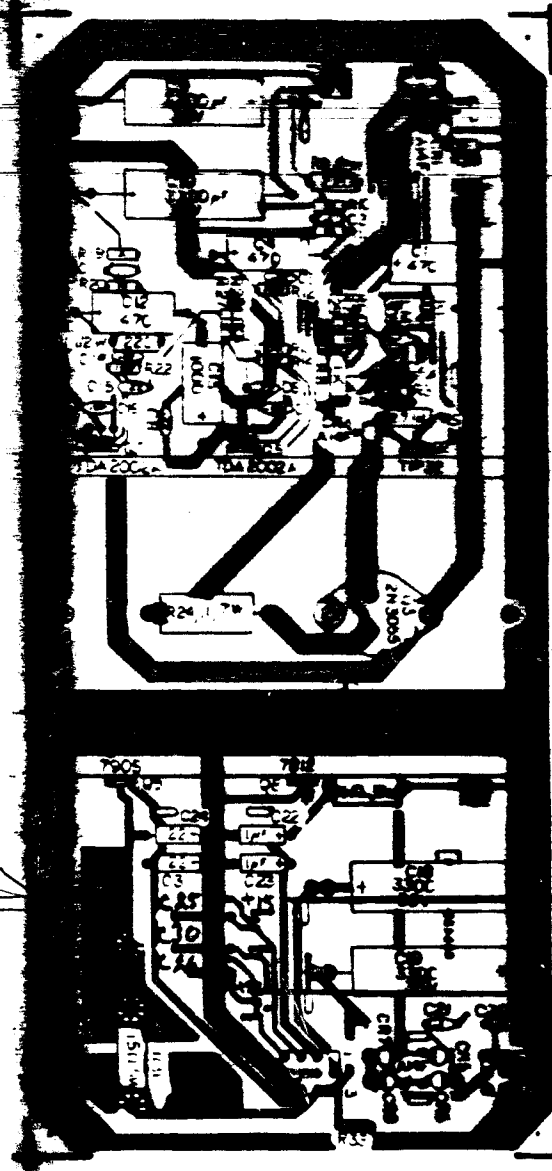
RUN NEXT WIRE FROM:

J10 PIN 10 TO A1 PIN P5 AND B1 PIN P5 (-15 VOLTS)

C. STUFFING PCB

1. INSTALL HEATSINKS TO 7815 AND 7915 VOLTAGE REGULATORS
2. INSTALL CAPS ACCORDING TO SCHEMATIC DIAGRAM

NOTICE TO ALL PERSONS RECEIVING THIS  
ISSUING  
CENTRAL  
REPRODUCTION  
OF THIS  
DOCUMENT  
IS PROHIBITED  
WITHOUT THE  
WRITTEN  
CONSENT  
OF THE  
OFFICE  
OF THE  
SECRETARY  
OF DEFENSE



C25, C30, C26  
+15 - 7815  
-15 - 7915

7815  
7915

**Regulator/Audio II PCB Assembly**  
**A035435-02**